



380 Southpointe Blvd, Plaza II
 Canonsburg, PA 15317
 Phone: (724) 416-3314
 Website: www.xclmidstream.com

WHO IS XCL MIDSTREAM

XcL Midstream, LLC is a growth-oriented natural gas midstream company formed to develop, acquire, and operate midstream assets in Southwest Appalachia, the most prolific gas region in North America.

If you observe any unusual or suspicious activity near our pipeline facilities or in the unlikely event an emergency occurs, please call us at any time using one of the numbers listed in this document.

More information on XcL Midstream can be found at: www.XcLmidstream.com

WHAT ARE THE SIGNS OF A NATURAL GAS PIPELINE LEAK?

- Blowing or hissing sound
- Dust blowing from a hole in the ground
- Continuous bubbling in wet or flooded areas
- Gaseous or hydrocarbon odor
- Dead or discolored vegetation in a green area
- Flames, if a leak has ignited

WHAT SHOULD I DO IF I SUSPECT A PIPELINE LEAK?

Your personal safety should be your first concern:

- Evacuate the area and prevent anyone from entering
- Abandon any equipment being used near the area
- Avoid any open flames
- Avoid introducing any sources of ignition to the area (such as cell phones, pagers, 2-way radios)
- Do not start/turn off motor vehicles/ electrical equipment
- Call 911 or contact local fire or law enforcement
- Notify the pipeline company
- Do not attempt to extinguish a natural gas fire
- Do not attempt to operate any pipeline valves

Pipeline Diameter: 4"- 24"

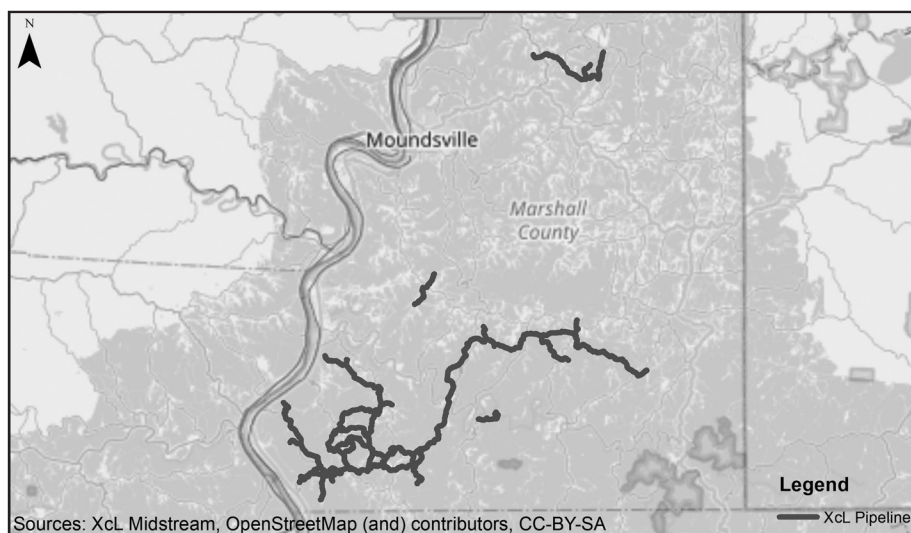
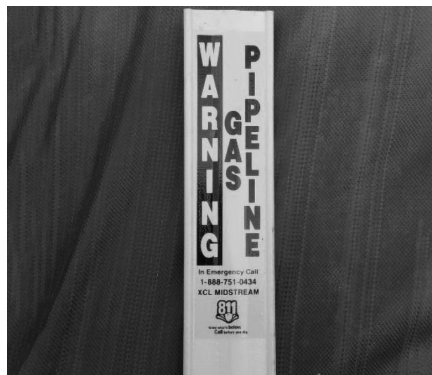
PIPELINE SAFETY

System failures occur infrequently along the nation's network of interstate natural gas pipeline facilities, and many of these are caused by damage from others digging near the pipeline. We watch for unauthorized digging, but we request your help to notify us.

ALWAYS CALL 811 BEFORE YOU DIG!

PIPELINE LOCATION AND MARKERS

Pipeline markers are used to indicate the approximate location of a natural gas pipeline and to provide contact information. Aerial patrol planes also use the markers to identify the pipeline route. Markers should never be removed or relocated by anyone other than a XcL Midstream pipeline operator.



EMERGENCY CONTACT:

1-888-751-0434

PRODUCTS/DOT GUIDEBOOK ID#/GUIDE#:

Natural Gas &	1971	115
Condensate		
NGL	1972	115

WEST VIRGINIA COUNTIES OF OPERATION:

Marshall

Changes may occur. Contact the operator to discuss their pipeline systems and areas of operation.

You can also find out where other companies' pipelines are in your area by going to the National Pipeline Mapping System website at www.npms.phmsa.dot.gov.

EMERGENCY RESPONSE PLANS

An Emergency Response Plan is developed for each pipeline facility to contain, control and mitigate the various types of emergency conditions/ situations that could occur at one of our facilities. For more information regarding XcL Midstream Pipelines, emergency response plans, and procedures please contact us at contact@xclmidstream.com.

HOW TO RECOGNIZE A PIPELINE EMERGENCY

The following items may indicate a Natural Gas or Natural Gas Liquid leak or failure:

Gas

- Gas escaping from the pipeline
- Hissing or spewing sound
- Dead vegetation
- Fire at or near the pipeline
- Hole in the ground
- Rotten egg odor
- Frozen ground

Liquid

- Liquid escaping from the pipeline
- Spewing sound
- Dead vegetation
- Erosion
- Hydrocarbon odor
- Low lying vapor –similar to fog
- Frozen ground

REPORTING OF EMERGENCIES:

- Call 911
- Contact XcL Midstream Number
(888) 751-0434

WHAT TO DO IN THE EVENT OF A NATURAL GAS OR NATURAL GAS LIQUIDS EMERGENCY

Excavators

- Do not drive into the area where the leak or vapor cloud is located
- Do not make contact with escaping liquids or vapors
- Avoid possible ignition sources (e.g., turn off and abandon all equipment, vehicles, and or generators being used in the affected area)
- Do not light a match, start an engine or automobile, use a telephone, switch on/off an electric light, or ring doorbells
- Immediately leave the area, on foot in an upwind direction
- From a safe distance call 911 and the XcL Midstream emergency number
- Wait, if in a safe area, for XcL Midstream personnel to arrive on site and do not try to operate any pipeline valves yourself
- Warn others to stay away from the area

PUBLIC OFFICIALS & EMERGENCY RESPONDERS

- Evacuate people (homes, businesses, schools...etc.) to an upwind area
- Secure area around the leak
- If the pipeline leak is not burning, take steps to prevent ignition such as prohibiting smoking, and rerouting traffic away from the leak.
- If the pipeline is burning, take steps to prevent secondary fires, but do not attempt to extinguish a pipeline fire unless asked to do so by XcL Midstream
- Do not try to operate any pipeline valves yourself (unless directed by XcL Midstream)
- Call the XcL Midstream emergency number as soon as possible
- Administer medical treatment and request additional emergency response assistance as necessary